

Red Head Villages

Community Plan for a sustainable future 2024-2030

Green Island, Manyana Beach and settlement north to Monument Beach. A. Lees



Berringer Lake. G. Davey

Contents

- Executive Summary 1
- About this Plan 2
- Who We Are 3
- Where We Live 4
- What We Value 5
- Red Head Villages Character Statement 7
- Red Head Villages Community’s Concerns 8
- Actions and Accountabilities 9
- RHVA Community Action Plan 2024-2030 9

Red Head Villages Community plan for a sustainable future 2024-2030

Proudly facilitated by the Red Head Villages Association



We acknowledge the traditional owners and custodians of this Country and their continuing connection to the Land through Culture and Community. We pay our respects to Elders past, present and future.

Images used in this document have been provided by local photographers. With thanks to Alex Lees, George Davey, Dawn Wilson, Martine Bright, and Lorraine Larri.

Executive Summary

The Red Head Villages Community Plan for a Sustainable Future (the Plan) has been developed by our Red Head Villages community based on the collective knowledge of everyone who participated in four community drop-in sessions (approximately 180 people) in October 2022 and a survey (406 people) in April/May 2023.

This Plan represents the community's expectations and is a call to action for ongoing engagement between the community, Shoalhaven City Council (SCC) and others. Our Red Head Villages Association (RHVA), through its elected Committee will manage the implementation of this Plan with ongoing community consultation. RHVA is our voice to SCC because it is our official Community Consultative Body.

We see this Plan as a living document that will guide the work of the RHVA from now until 2030. The Plan sets out our community's unique character and concerns for its future sustainability. It establishes our priorities, recommends actions and opportunities for partnering and advocacy with SCC. It is hoped that all levels of government – Local, State and Federal will support us in achieving our strategic priorities in relation to the following six themes: Climate Change, Conjola National Park, Community Social Interaction, Village Amenity, Connectivity of Villages and Delivery of Services, Planning and the Built Environment.

The RHVA Community Plan for a Sustainable Future 2024-2030 is a synthesis of all the information gathered throughout the community consultation process. This project was made possible by funding from the Foundation for Rural and Regional Renewal and Shoalhaven City Council. This document was developed collaboratively by the Committee of the RHVA, the Community Working Group (CWG), Locale Consulting, and Grammarfun. We acknowledge and thank everyone in the community who participated in the process and gave generously of their time and local knowledge.

In particular, the RHVA thanks the CWG members Martine Bright, Kerry Moore, Peter Hudson and Lorraine Larri for successfully steering this project.

About this Plan

The Red Head Villages Association Community Plan for a Sustainable Future (the Plan) was formed through extensive consultation with our community. Its focus is how we want our community to develop, facing the challenges of climate change, bushfires and potential growth in population and tourism.

In 2020, after receiving funding from the Foundation for Rural Regional Renewal and Shoalhaven City Council (SCC), a Project Reference Group (PRG) was established. This was replaced in 2022 by a Community Working Group (CWG) which was assisted by Locale Consulting. The CWG held 12 formal meetings from May 2022 to July 2023 (and one with staff from Shoalhaven City Council) to develop a community consultation strategy.

A significant number of people took time out to participate in the process. Four community workshops were held involving 180 participants (October 2022) and a survey asking quantitative and qualitative information was completed by 406 individuals (April/May 2023). The survey included theme specific questions directly based on the results of the community workshops. These efforts brought together the many voices of the Red Head Villages community.

A separate document, the RHVA Community Engagement Findings and Directions Report, includes further details of the consultation process. Locale Consulting was responsible for data collection and the initial drafts of that report and this Plan. Grammarfun and the RHVA CWG collaborated to finalise these two documents.

The Plan sets out our community's unique character and concerns for future sustainability. It establishes our priorities, recommends actions and opportunities for partnering and advocacy with SCC. It is hoped that all levels of government – Local, State and Federal will support us in achieving our strategic priorities. Six

themes emerged from the consultation process, and the data from the surveys confirmed community support for actions related to each theme:

- > Climate Change
- > Conjola National Park
- > Community Social Interaction
- > Village Amenity
- > Connectivity of Villages and Delivery of Services
- > Planning and the Built Environment

This Plan is a living document that will guide the work of the RHVA from now until 2030. It represents the community's expectations and is a call to action for ongoing engagement between the community, Shoalhaven City Council (SCC) and others. In particular, it links with the SCC Local Strategic Planning Statement 2040 and its Community Strategic Plan. The elected Committee of our Community Consultative Body, the Red Head Villages Association (RHVA), will manage the implementation of this Plan through ongoing consultation with the community.



Community Drop-In Session. M. Bright

Who We Are

The Red Head Villages community has a mix of coastal village and rural lifestyles. It comprises a combination of permanent and part-time residents, and seasonal holiday makers. This is a natural setting to which residents have strong ties. The land, sea and natural environment are valued, respected and need to be carefully managed, particularly due to current and future climate change impacts and pressures on housing availability and affordability leading to further housing development.

The 2021 Australian Bureau of Statistics census data for residents normally living in the five Red Head Villages (see Figure 2) is reasonably consistent with the demographic data of the survey and workshop sessions. These were also open to non-permanent residents. Of the 988 dwellings only 40% (393) are permanently occupied, leaving 60% (595) unoccupied most of the time (2021 Census All persons QuickStats).

Figure 1 ABS Census data about who we are (Source: 2021 Census)

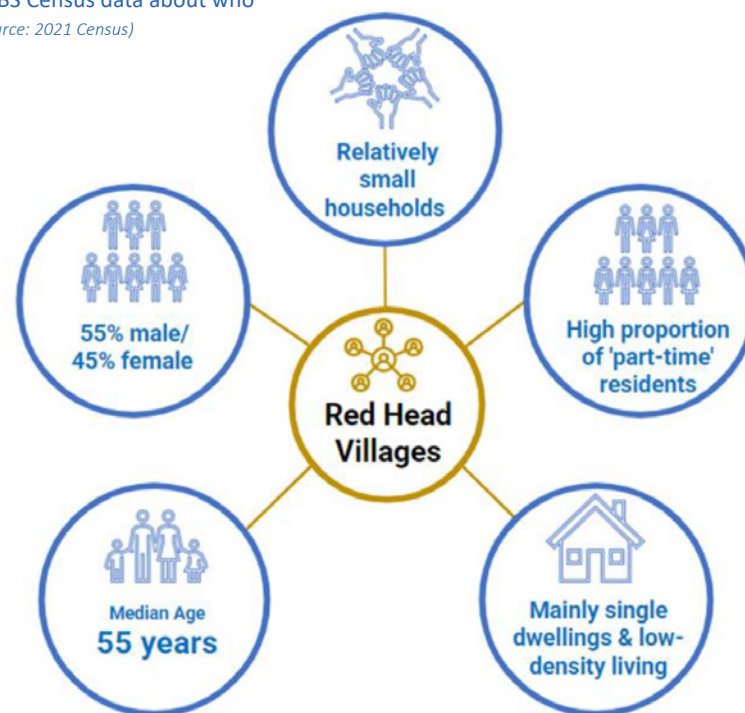


Figure 2 Census data for the Five Villages and District (Source: 2021 Census All persons QuickStats)

	MANYANA	BENDALONG & NORTH BENDALONG	CUNJURONG POINT	BERRINGER LAKE	TOTAL 2021 CENSUS	TOTAL SURVEY RESPONDENTS ¹
Place of usual residence	670	135	111	30	946	406
Total males	53.2%	57.8%	52.9%	58.1%		40%
Total females	46.8%	42.2%	47.1%	41.9%		59%
Median age	55	55	60			
45-74yrs	51.6%	50.4%	68.8%	(data unavailable)		76%
20-44yrs	23.2%	16%	20%			24%

Note: Survey respondent data includes full-time, part-time residents and holiday-makers whereas the Census 2021 data only includes permanent residents, therefore the comparison is indicative only.

Where We Live

Located in the Shoalhaven region, the Red Head Villages community lives in the villages of North Bendalong, Bendalong, Manyana, Berringer Lake and Cunjurong Point and their surrounds, including along Bendalong Road and the Nerringillah Valley. This Plan includes the community's concerns for these areas, as well as the neighbouring Conjola National Park and Lake Conjola.

These areas are subject to the forces of nature and Anthropocene Age impacts of climate disruption.

For instance, Lake Conjola, an intermittently closed and open lake and lagoon (ICOLL) is affected by rainfall extremes that cause its closure or flooding. Manyana headland is subject to landslides and mini tornadoes. Coastal inundation predictions are for inundation to occur around Boat Harbour and Washerwoman's Beach. Our marine environment is warming, that is leading to loss of seaweed gardens which are sanctuaries for fish spawning.

During the 2019/2020 Black Summer, the Currowan Megafire surrounded the district. The community was cut off when Conjola National Park was on fire and our one access road, the Bendalong Road was beset by fire. Approximately 3,000 people were isolated and unable to evacuate for several days.



What We Value

Community members shared what we value about the Red Head Villages. The word cloud in Figure 3 was generated from community workshop comments.



Figure 3 Word cloud generated from community workshop comments about what we value most

Here are some of the quotes from the community workshops and survey that represent the most typical views:

Nature and Environment:

- > the bush and the beach meet perfectly at our front door
- > it is surrounded by nature, separated by nature, in harmony with nature. This place is unique because of this.
- > It is a place of peace and serenity
- > low density living, in harmony with the unspoilt natural environment
- > The unspoilt natural environment separating our villages is unique. Being surrounded by nature is unique. People come here to enjoy this uniqueness.

Community and amenity

- > [we want to ...] Be the community that listens and learns from the traditional owners and custodians of this land in order to preserve the natural environment.
- > we value the indigenous community and supporting greater cultural awareness
- > people are friendly and generous and relaxed
- > generations of my family have enjoyed the walks, the surfing, the ocean life and the wildlife.
- > The five villages are separate. My children and grandchildren have been fortunate to live in a pristine area surrounded by lake, National Park and ocean, and enjoy a surfing lifestyle here.
- > The community work together in hard times and laugh together in the fun times.
- > Everyone is friendly and willing to help out. The 2020 bushfire event distinguished this community from many others because of the way the community pulled together.
- > The strong community involvement in volunteering to improve local infrastructure such as the Pathways Project connecting our villages
- > Surf, kayak, fish, mountain trail bike, walk, stand up paddle - you can do it all without hassles
- > It has a lovely sense of community, relatively un-touched. We want to live here in the near future but would like to see appropriate development to entice more permanents to the area to who in turn support more local businesses.
- > The Five Villages constitute one of the few (and getting fewer) classic Aussie beachside communities. In a spectacular bush and beach surrounding, they remain low key and quite close knit.
- > The reason many of us have chosen to live in the area and raise children here is because of the natural beauty that surrounds us, the opportunities to explore and immerse ourselves in it, the slow pace of life and the knowledge that you are surrounded by likeminded people.

Preserving and sustaining

- > At this critical time on our planet our community aims to reimagine an interconnected way of living. We co-create a survivable village through cooperation that takes ethical responsibility for the living world and uses ecological science to establish a regenerative example for a liveable future.
- > [we want to ...] Develop the Red Head Villages as a model of sustainable, environmentally sympathetic development, stopping the removal and degradation of the natural environment that makes our region and country so special.
- > The low density living is brilliant. It would be good to see fewer rebuilds of large homes which spoil the aesthetic of these villages.
- > It's important to limit development
- > The ambience that existing low key development creates is what sets this place apart from all other coastal villages within four hours of Sydney.
- > If I want more facilities I can go to Ulladulla or Milton
- > community is bonded by a sense of guardianship for the preservation of the uniqueness of the coastal villages
- > I love that people take care of the environment and I see animals that I never see in nature
- > ensure coastal communities situated in high value natural environments are protected by appropriate legislative controls e.g. specific zoning controls.
- > We are a community that will protect, celebrate and honour our natural environment so our families and others can enjoy it into the future. We stand for nature.
- > It's so important to limit development so that people fit within the natural environment and not override it. The beauty of the area, the ecosystem is what brings most of us here so to keep this balance is primary.



Endangered Crested Tern. G. Davey



Migratory Bar-Tailed Godwit. G. Davey

Giant Stingray at Boat Harbour. M. Bright

Red Head Villages Character Statement

This character statement is the result of information gathered from community consultation through workshops and a survey. It is designed to represent what we value about the unique character of our district and how we see the future of the of the Red Head Villages

The purpose of our character statement is two-fold:

1. It acts as an overarching direction for our community as we move forward with implementing this Plan; and,
2. It sets clear intentions for all future planning and decision making within the area.



Endangered Red-capped Plover. G. Davey

Acknowledgement to Country – Always was, always will be Aboriginal Land

The Red Head Villages and their coastal hinterland comprise a collective community of inter-generational individuals, families and visitors. We each acknowledge and respect the Dhurga and Dharwal language groups and associated family groups of Shoalhaven and Ulladulla areas, the traditional owners of the land and sea country we treasure, share and protect.



Overlooking Boat Harbour. M. Bright

Communities in harmony with the natural environment

Residents, visitors and tourists alike deeply value the pristine and interconnected coastal, marine and bushland environments of the area. While we treasure our close proximity to the natural environment, we accept and respect the adversity and physical constraints this can place on us. Over generations, this has fostered a community which values diversity and whose social fabric is defined by strength, resilience and cohesion.

North Bendalong, Bendalong, Manyana, Berringer Lake and Cunjurong Point are encircled by national parks, iconic native forests and bushland that define the NSW South Coast. Living side-by-side with nature has fostered a true appreciation of its unique social, cultural and economic value as well as a respect for its fragility. We, as a community, are committed to conserving this for future generations.

We accept our villages face limitations as a result of natural disasters and climate disruption. We also acknowledge the role human inadequacies can play in shaping our future. We work together towards mitigating impacts and greater community resilience.

Protecting, preserving and planning for a sustainable future

The Red Head Villages are examples of unique South Coast hamlets and that makes them a critical part of our national heritage. We believe it is possible to protect our unique environmental, social and community values, while meeting the needs of future residents and visitors.

We value democratic solidarity and accept our responsibility as the contemporary custodians of this priceless place. With a united voice, actions and words underpinning our shared values, we are committed to ensuring a sustainable future for all.

Our collective desired future character of the Red Head Villages is one where all future development and the new built environment harmonise with the low-density, detached cottages that the area is so renowned for, as well as the beautiful surrounding bushland and nature. These are aspects that have attracted generations of people to the area and shaped our community.



Red Head Villages Community's Concerns

Overall, the community agreed that the following six major themes need concerted efforts for strategic action by the community in coordination with and supported by the Council and State Government agencies.

1. Climate Change
2. Conjola National Park
3. Community Social Interaction
4. Village Amenity
5. Connectivity of Villages and Delivery of Services
6. Planning and the Built Environment

We acknowledge some overlapping among the themes as they refer to various aspects of what the community values and how to work to retain and build on that. Figure 4 lists the themes and explanations of why they were considered important.



Endangered Male Gang-Gang, Curriers Drive, A. Lees

Figure 4 Major themes for planning and their explanation

THEME	EXPLANATION
Climate Change	We see an urgent need to investigate, understand, educate and take action to prepare for climate change. As a community, we inform ourselves and others to adapt to climate-based impacts, including cumulative impacts.
Conjola National Park	We live in a unique location, surrounded by a national park, crown land and the sea. We respect its biodiversity and act to conserve it for future generations. We want to balance enforcement of rules and regulations with reasonable and appropriate access to Conjola National Park.
Community Social Interaction	We value our strong community connections and working together on common goals. We are a close-knit and caring community. We intend to leverage the strength and unity within our community to influence Council and relevant other government agencies to reach goals as stated in this Plan.
Village Amenity	We value preserving the unique natural beauty and coastal village character of the local area, while ensuring adequate infrastructure for people to thrive.
Connectivity of Villages and Delivery of Services	We expect the five Red Head Villages to continue as individual villages while being physically accessible to each other through well maintained infrastructure and facilitated service delivery
Planning and the Built Environment	We value the importance of our natural environment and village character. We respect the Red Head Villages character statement and expect that it is enforced to protect the natural environment and village character when decisions about the built environment are made.

Actions and Accountabilities

Following the analysis of all data from the survey and the four workshops, the themes were refined into action statements with specific actions identified for the community and for the community in partnership and collaboration with SCC. This went to the CWG and the RHVA Committee for final refinement with achievable goals and specified time frames.

We acknowledge overlap among the themes and that the action statements can be logically linked to various themes. In particular, there is a considerable interweaving among the action statements related to the planning and the built environment theme underpinning the community's interests, and other themes. This Plan identifies actions we aim to implement by 2030. For brevity, these are presented against one theme rather than across several themes.

We recognise that there will be emergent issues for ongoing consultation and consideration. For example, it is clear that preservation of the current coastal hamlet character is paramount. Further discussion will likely look in more detail at preferences for future housing if and when required, desired population, better transport linkages, access to health services, preferred residential block sizes, shade and tree canopy maintenance in order to mitigate

environmental warming, wildlife corridors, protection of sensitive ecological areas from residential or visitor impacts, and support for local wildlife carers.



RHVA Community Action Plan 2024-2030

Climate Change

We see an urgent need to investigate, understand, educate and take action to prepare for climate change. As a community, we inform ourselves and others to adapt to climate-based impacts, including cumulative impacts.

We will ensure preparedness for impacts of climate change by:

- > Taking steps to reduce the impacts of bushfires
- > Improved management of the impacts of coastal erosion
- > Identification and implementation of improved management methods for local food and waste
- > Adaptation to climate-based impacts on the community

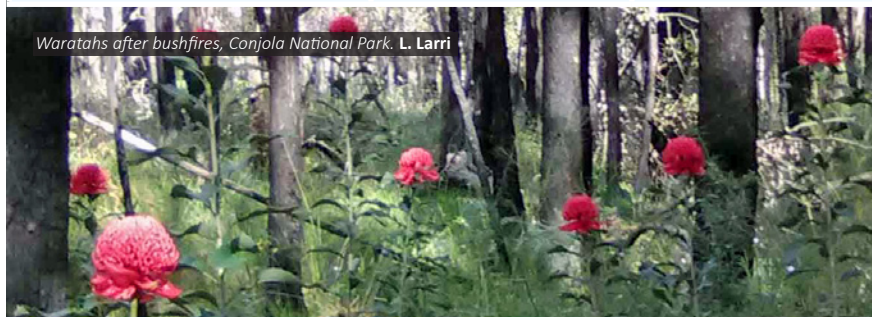
10



COMMUNITY ACTIONS	TIME FRAME <i>Short-term: 2024-2025</i> <i>Medium-term: 2025-2027</i>	PARTNERING AND ADVOCACY WITH SHOALHAVEN CITY COUNCIL	TIME FRAME <i>Short-term: 2024-2025</i> <i>Medium-term: 2025-2027</i>
Protect our wildlife and communities by: <ol style="list-style-type: none"> 1. advocacy and liaison with local private land owners to facilitate cultural burning opportunities led by First Nations experts and the Rural Fire Service 2. planting and encouraging fire retardant vegetation throughout the villages 	Medium-term & ongoing	Advocate for Council to implement any applicable land use planning recommendations from the NSW Independent Inquiry into the 2019-2020 bush fire season and the NSW Government Inquiry into the Planning System and the Impacts of Climate Change on the Environment and Communities In partnership with Council prepare a resilience action plan to reduce the impacts of bushfires Advocate with Council to implement coastal erosion management actions e.g. planting appropriate foreshore vegetation, improving walking tracks, and beach access which mitigates erosion	Medium-term
Improve management of local food resources to reduce waste e.g. by seeking funding to hold home composting workshops	Medium-term & ongoing		
Investigate self-sufficient energy sources such as micro grids, and inform Council and relevant government and other agencies of feasible options	Medium-term & ongoing		



Forest After the Fires with Bus shelter (murals by G. Kilby), Cunjurong Point Road. A. Lees



Waratahs after bushfires, Conjola National Park. L. Larri



Vulnerable Leafless Tongue Orchid. D. Wilson



Path to Monument Beach, North Bendalong. L. Larri



Red Beard Orchid. D. Wilson

Conjola National Park

We live in a unique location, surrounded by a national park, crown land and the sea. We respect its biodiversity and act to conserve it for future generations. We want to balance enforcement of rules and regulations with reasonable and appropriate access to Conjola National Park.

We will preserve and improve the highly valued natural and cultural environment by working towards:

- > Effective maintenance and connection of wildlife corridors
- > Identification and conservation of biodiversity values in the context of any new development
- > Conservation and enrichment of First Nations and European Heritage
- > Effective management of the fragile marine and coastal natural environment
- > Additional resources for, and effective control of, human impacts on Conjola National Park

COMMUNITY ACTIONS	TIME FRAME <i>Short-term: 2024-2025</i> <i>Medium-term: 2025-2027</i>	PARTNERING AND ADVOCACY WITH SHOALHAVEN CITY COUNCIL	TIME FRAME <i>Short-term: 2024-2025</i> <i>Medium-term: 2025-2027</i>
In partnership with private land owners identify potential parcels of land for conservation agreements	Medium-term & ongoing term	In partnership with Council and First Nations leaders, establish a working party to review local heritage data and information (both First Nations and European), and prepare heritage interpretation plans for the Red Head Villages	Medium-term
Advocate with government to protect our wildlife through the recognition, preservation and protection of wildlife corridors linking Council Reserves to the Conjola and Morton National Parks	Medium-term & ongoing		
Facilitate citizen science projects to identify and document areas for biodiversity protection	Medium-term & ongoing		
Seek grant funding to commission local First Nations people to run workshops for community in learning about Country	Medium-term & ongoing		
Develop an education campaign on the importance of managing companion cats' impact on native wildlife.	Short-term		
Advocate for better regulation of motor bikes in National Parks through consultation with National Parks and Wildlife.	Short-term		

Conjola National Park (continued)



Kookaburra. G. Davey

COMMUNITY ACTIONS	TIME FRAME <i>Short-term: 2024-2025</i> <i>Medium-term: 2025-2027</i>	PARTNERING AND ADVOCACY WITH SHOALHAVEN CITY COUNCIL	TIME FRAME <i>Short-term: 2024-2025</i> <i>Medium-term: 2025-2027</i>
Establish a working party to meet with Crown Land NSW, NPWS and Council on an annual basis to address all cross-boundary issues associated with environmental management, weed control, waste management, access to land, funding, policing of rules and the like in relation to the lands that surround the villages	Short-term and ongoing		
Advocate for adequate resources for the effective control of Conjola National Park by liaising with NPWS and the NSW Government	Ongoing		
Investigate the establishment of a marine park in consultation with Government and other relevant agencies	Medium-term & ongoing		



Southern Right Whales - Mother and Calf. A. Lees



Pelicans at Boat Harbour. A. Lees

Red Head Villages Association



Community Social Interaction

We value our strong community connections and working together on common goals. We are a close-knit and caring community. We intend to leverage the strength and unity within our community to influence Council and relevant other government agencies to reach goals expressed in this Plan.

We will retain and enhance village character by valuing its people and the community setting by:

- > Continuing to build community through face-to-face interactions
- > A range of community events and activities that respond to all demographics that make up the community (including tourists)
- > Increased collaboration between community and government agencies to ensure community representation in decision making
- > Greater focus on local cultural heritage

COMMUNITY ACTIONS	TIME FRAME <i>Short-term: 2024-2025</i> <i>Medium-term: 2025-2027</i>	PARTNERING AND ADVOCACY WITH SHOALHAVEN CITY COUNCIL	TIME FRAME <i>Short-term: 2024-2025</i> <i>Medium-term: 2025-2027</i>
Continue to build community through face-to-face interactions such as markets, music festivals, community BBQs for all in the community (including residents, visitors and holidaymakers of all ages and lifestyles)	Short-term & ongoing		
Prepare, consult on and adopt an annual Calendar of Events that meets the needs of all demographics and all resident types in the Red Head Villages, including visitors	Medium-term & ongoing		
Facilitate community engagement approaches when working with Council and other Government bodies	Ongoing		
Always consult with local First Nations people to ensure cultural knowledge guides community engagement.	Ongoing		
Explore options for developing a repair, reuse and upcycling 'shed' for skills sharing.	Medium-term		

Village Amenity

We value preserving the unique natural beauty and village character of the local area, while ensuring adequate infrastructure for people to thrive.

We will influence development outcomes that respect the scale of the villages, by continuing to build a strong and engaged community by:

- > Recognition by Council and other levels of Government of the Red Head Villages Character Statement in decision making for all new development
- > Advocacy to improve planning controls that reduce ad-hoc development outcomes and respond to historic planning decisions
- > Advocacy to improve digital connections and communications for residents and visitors

COMMUNITY ACTIONS	TIME FRAME <i>Short-term: 2024-2025</i> <i>Medium-term: 2025-2027</i>	PARTNERING AND ADVOCACY WITH SHOALHAVEN CITY COUNCIL	TIME FRAME <i>Short-term: 2024-2025</i> <i>Medium-term: 2025-2027</i>
Implement a promotional campaign for the Red Head Villages Character Statement developed to reach all stakeholders involved in the future of the Red Heads Villages	Short-term & ongoing	Council recognises the Red Head Villages local character statement in decision making for all new development Work with the Council and relevant state agencies to identify opportunities for the Red Head Villages Character Statement to guide planning controls and in-fill development decisions	Short-term Medium-term & ongoing
Continue to seek grant funding opportunities to support the implementation of this Plan, and establish a group to review this Plan at regular intervals	Ongoing	Present this Community Plan to Council for recognition so collaboration actions in this Plan can progress Implement a regular meeting arrangement between RHVA Committee representatives and relevant Council departments e.g. Community Connections, Planning and Development to progress collaborative actions	Short-term Short-term
Advocate to the NSW Government on mitigating the impact of jet ski use on our waterways, the community and its visitors.	Short-term		
Encourage greater community use of public land and public facilities e.g. community garden, playgrounds, Yulunga Hall, tennis courts etc.	Short-term & ongoing		



Yulunga Reserve Hall and Playground. L. Larri

Village Amenity (continued)



Black Cockatoo Mural, bus shelter, Bendalong. Artists: S. Cole, S. Westaway, G. Walker, L. Larri

COMMUNITY ACTIONS	TIME FRAME <i>Short-term: 2024-2025</i> <i>Medium-term: 2025-2027</i>	PARTNERING AND ADVOCACY WITH SHOALHAVEN CITY COUNCIL	TIME FRAME <i>Short-term: 2024-2025</i> <i>Medium-term: 2025-2027</i>
Review the constitution and structure of the RHVA to ensure it is as engaged with, and representative of, the entire community	Medium-term		
Build community engagement with the RHVA via improved communication methods	Medium-term		
Build links with other Shoalhaven communities through the SCC Community Consultative Body network	Ongoing	Prepare a list of planning matters that need to be addressed locally with Council inclusive of the following: <ul style="list-style-type: none"> • Managing local or neighbourhood character • Improvements to local infrastructure contributions • Improved road access connectivity • Climate resilient housing and infrastructure • Protecting coastal villages and rural land • Protecting tree canopies and corridors • Resolving known legacy sites in existing planning documents and approvals 	Short-term & ongoing



Pathway to Bendalong. L. Larri



Berringer Lake Boat Ramp. L. Larri

Connectivity of Villages and Delivery of Services

We expect the five Red Head Villages to continue as individual villages while being physically accessible to each other through well maintained infrastructure and facilitated service delivery.

We will achieve appropriate services, facilities and fit for purpose infrastructure appropriate to the needs of both residents and visitors, whilst respecting the scale of the village setting by advocating for:

- > Improved facilities that meet the needs and demands of the local community
- > Enhancement and provision of services for youth and the elderly
- > Improvement of access to health services

COMMUNITY ACTIONS	TIME FRAME <i>Short-term: 2024-2025</i> <i>Medium-term: 2025-2027</i>	PARTNERING AND ADVOCACY WITH SHOALHAVEN CITY COUNCIL	TIME FRAME <i>Short-term: 2024-2025</i> <i>Medium-term: 2025-2027</i>
Review all Crown Land parcels and ensure they are managed to benefit/safeguard the whole community.	Short-term & ongoing	Work with Council to prepare a master plan for public land showing where new or upgraded facilities are desired by the community, such as seating, rubbish bins, toilets, exercise equipment etc.	Medium-term
Embrace the whole community, including First Nations people, young people and the elderly when advocating for community services.	Ongoing		
Strengthen the provision and range of services for young people and the elderly	Medium-term	Meet regularly with Council to plan improved community facilities and services	Short-term & ongoing
Explore opportunities for improved health outreach facilities	Medium-term		
Prepare cycle and walking path priority plans, focusing on both existing and new paths and maintenance requirements	Medium-term		



Family Playground, Yulunga Reserve. L. Larri

Red Head Villages Association



Planning and the Built Environment

We value the importance of our natural environment and village character. We respect the Red Head Villages character statement and expect that it is taken into account when decisions about the built environment are made.

We aim to increase connectivity and mobility to and within the villages by advocating for:

- > Increased community input to infrastructure planning, delivery and maintenance, including road infrastructure
- > Improvement and maintenance of the local and regional road network, including evacuation routes
- > Creation, improvement and maintenance of the foot and cycle path network (with a strong focus on accessibility)
- > Improvement of public and community transport

COMMUNITY ACTIONS	TIME FRAME <i>Short-term: 2024-2025</i> <i>Medium-term: 2025-2027</i>	PARTNERING AND ADVOCACY WITH SHOALHAVEN CITY COUNCIL	TIME FRAME <i>Short-term: 2024-2025</i> <i>Medium-term: 2025-2027</i>
Prepare a community transport plan for the area, in conjunction with existing community transport providers	Medium-term	Continue to advocate and work with Council and relevant state agencies to advance works programs and timetables for implementation of regional and local road upgrades, including Bendalong Road	Ongoing
Continue to advocate and work with Council and relevant state agencies (Transport for NSW) and transport service providers to enhance and expand bus services and other new forms of regionally based public transport options, such as green transport, community transport, taxi services and carpooling, to suit the Red Head Villages area	Medium-term	Advocate to Council on improved beach access for residents and visitors with mobility support needs	Medium-term & ongoing





Red Head Villages
Community
Plan for a
sustainable
future
2024-2030



redheadvillagesassociation.org